



UNIVERSITY OF CAMBRIDGE INTERNATIONAL EXAMINATIONS
General Certificate of Education Advanced Subsidiary Level and Advanced Level



GEOGRAPHY

9696/12

Paper 1 Core Geography

October/November 2012

INSERT

3 hours

READ THESE INSTRUCTIONS FIRST

This Insert contains all the Figures, the Tables and the Photograph referred to in the questions.

This document consists of **7** printed pages and **1** blank page.



Photograph A for Question 1



Fig. 1 for Question 2

Night time temperatures across an urban area

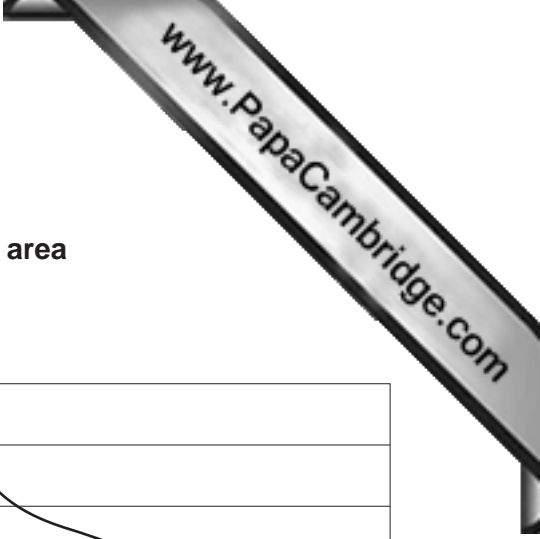
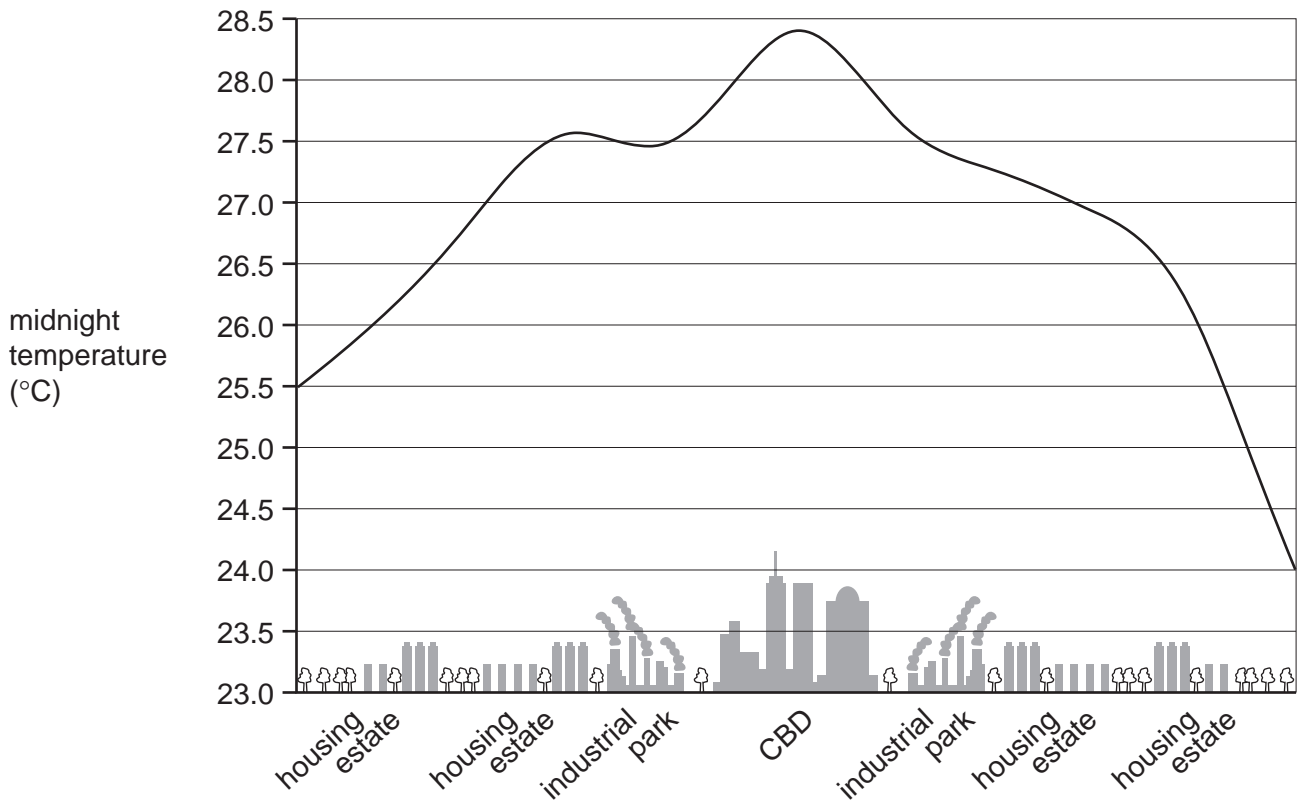
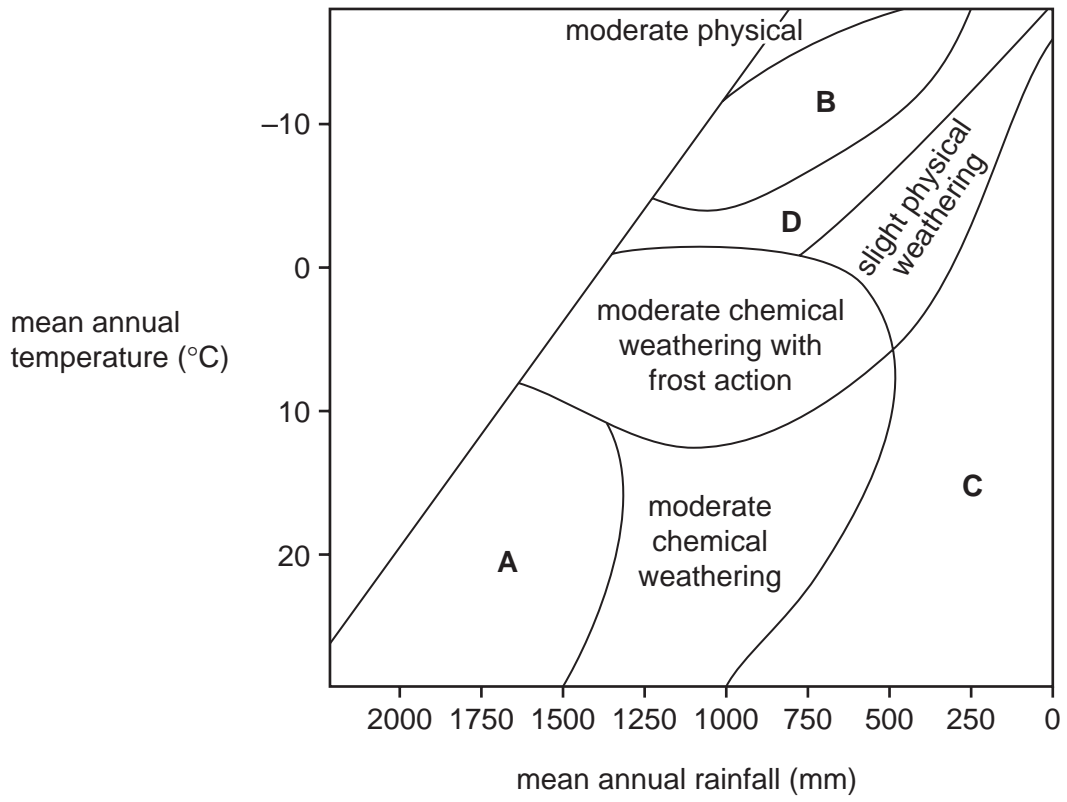


Fig. 2 for Question 3

Weathering processes and climate



Tables 1A and 1B for Question 4

Countries with population aged over 65 years, 2004

Top 5 countries by percentage of population aged over 65 years

| rank | country | number (millions) | percentage |
|------|---------|-------------------|------------|
| 1 | Italy | 11.07 | 19.3 |
| 2 | Japan | 24.52 | 19.2 |
| 3 | Greece | 2.06 | 18.7 |
| 4 | Germany | 14.97 | 18.1 |
| 5 | Belgium | 1.82 | 17.6 |

Table 1A

Top 5 countries by number of people aged over 65 years

| rank | country | number (millions) | percentage |
|------|--------------------|-------------------|------------|
| 1 | China | 97.15 | 7.4 |
| 2 | India | 56.51 | 5.2 |
| 3 | USA | 36.39 | 12.3 |
| 4 | Japan | 24.51 | 19.2 |
| 5 | Russian Federation | 19.89 | 14.0 |

Table 1B

Fig. 3 for Question 5
Remittances received from international migrants as a percentage of the country's GDP, 2006

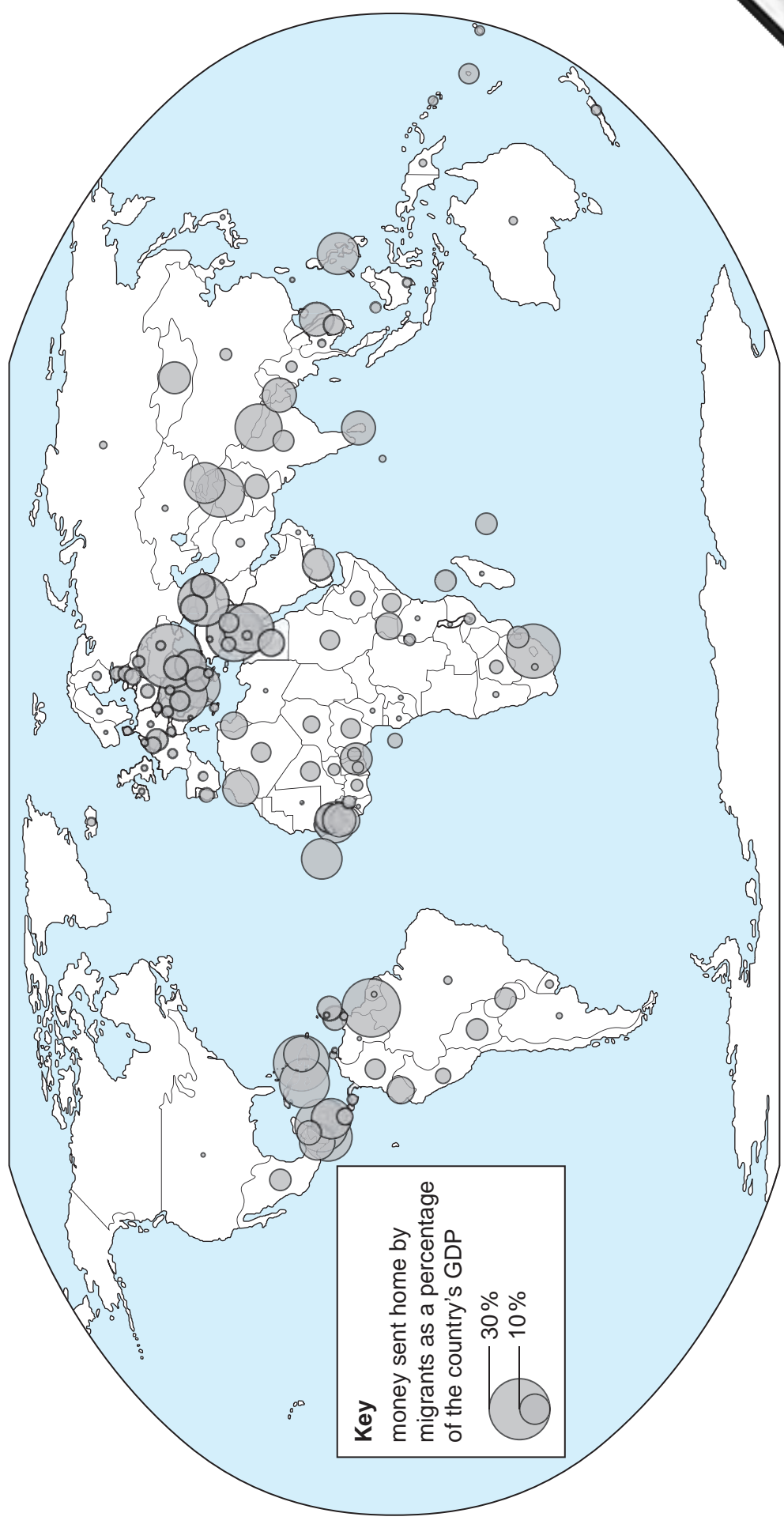


Fig. 4 for Question 6

Percentage urban population in 1950, 1975 and 2000 and predicted urban population in

